

2022 AZ-NV Precinct Analysis



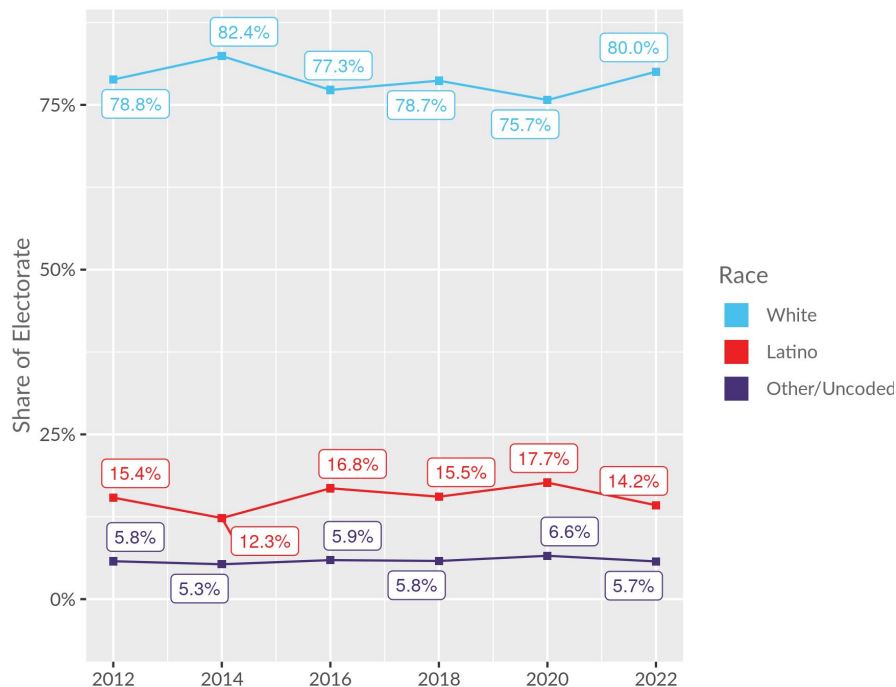
Key Findings: Arizona

Arizona

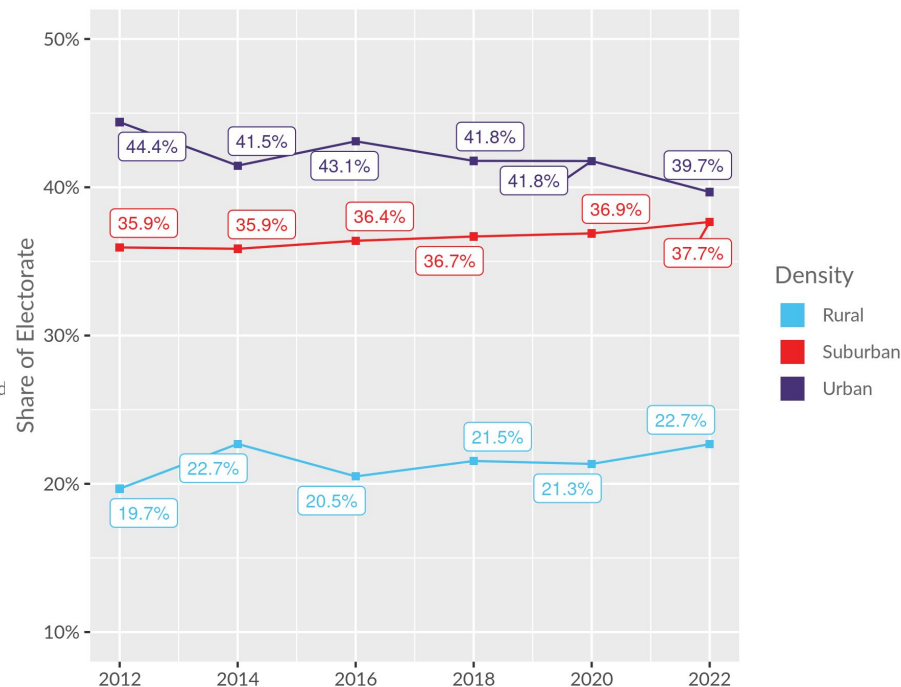
- Latino voters have made up >15% of the electorate in every election since 2016.
- Over the past decade, more than a quarter of all precincts in AZ have had a substantial population of Latino voters.
 - As of 2023, over one-third of all precincts in AZ have a substantial Latino population.
- Dems lost majority in AZ's congressional delegation, but Dems in the state's majority-Latino districts (AZ-03, AZ-07) comfortably won re-election.
- Areas with high proportions of Latino voters tend to be more supportive of Democratic candidates.
- Latinos, young voters, and voters in suburban areas are increasingly significant groups in Arizona's electorate, and their growth has supported electoral gains for Democrats in the state.

Demographic Trends: Arizona

Race

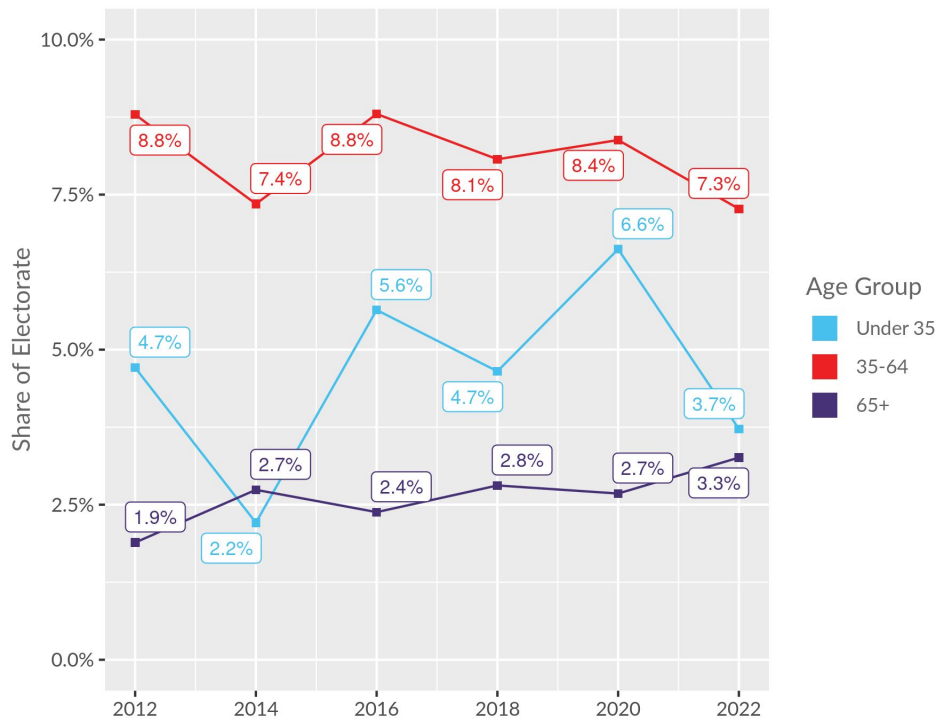


Density

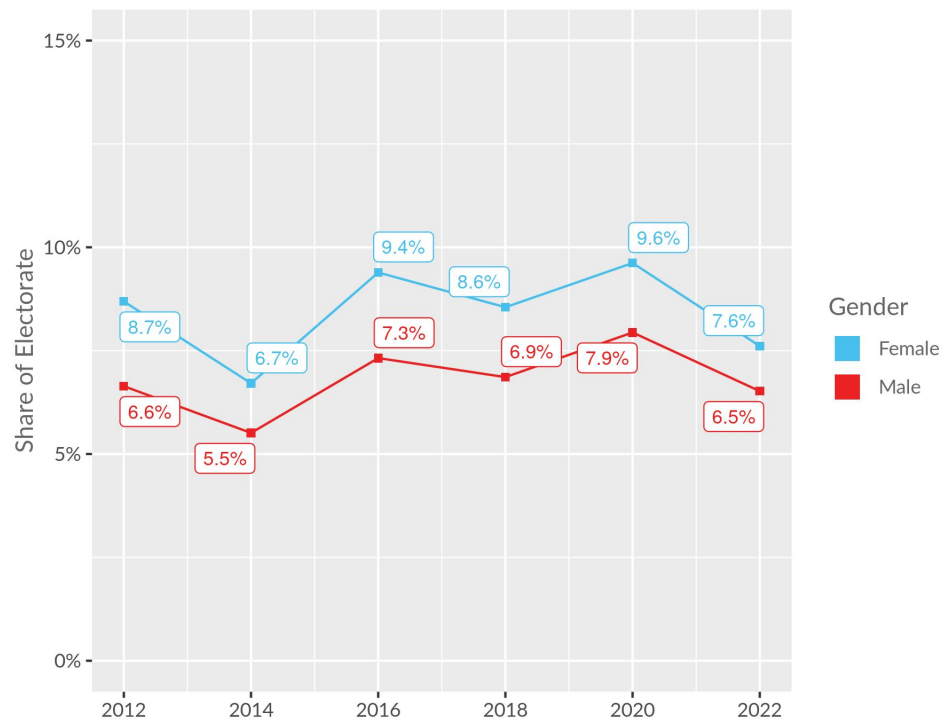


Demographic Trends: Arizona

Age (Latino Voters)



Gender (Latino Voters)



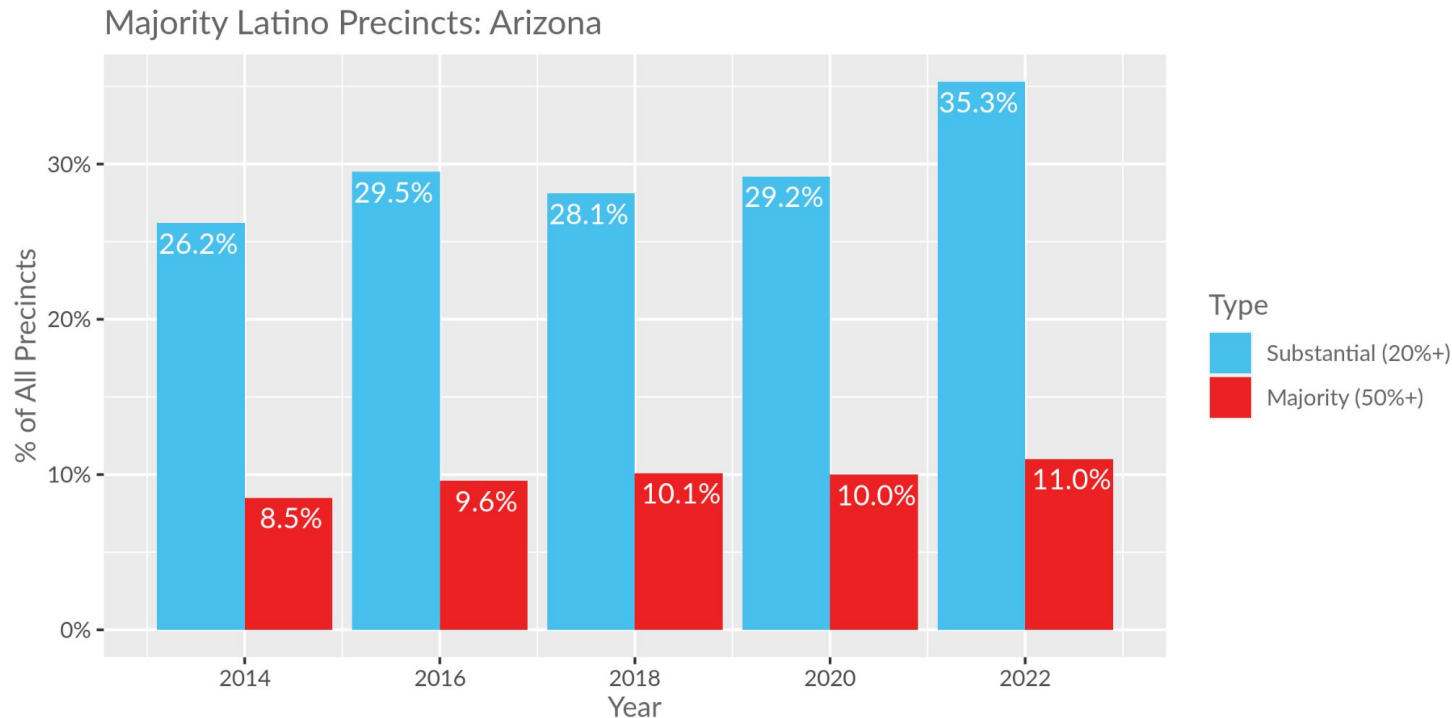
Majority-Latino Districts: Arizona

The below table shows the proportion of precincts in Arizona that had either a substantial share or majority share of registered voters flagged as Hispanic or Latino on the voter file.

Latino Precincts					
Election Year	Total Precincts	Substantially Latino Precincts (20%+)	% Precincts Substantially Latino	Majority Latino Precincts (50%+)	% Precincts Majority Latino
2022	1,686	595	35.3%	185	11.0%
2020	1,484	433	29.2%	149	10.0%
2018	1,493	419	28.1%	151	10.1%
2016	1,465	432	29.5%	141	9.6%
2014	1,562	410	26.2%	132	8.5%

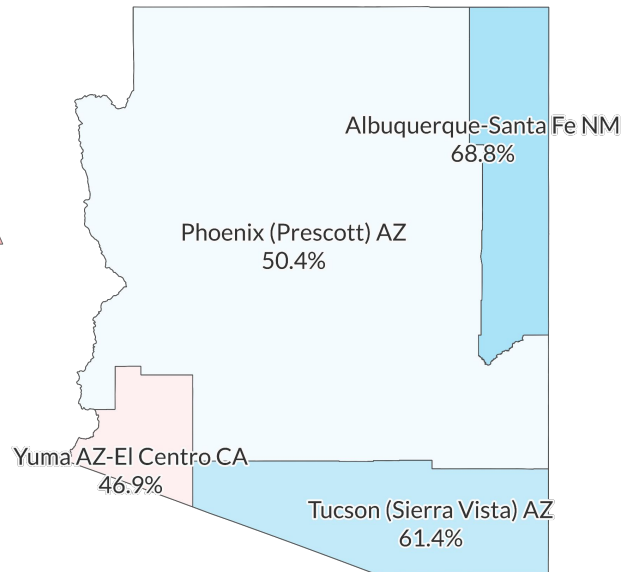
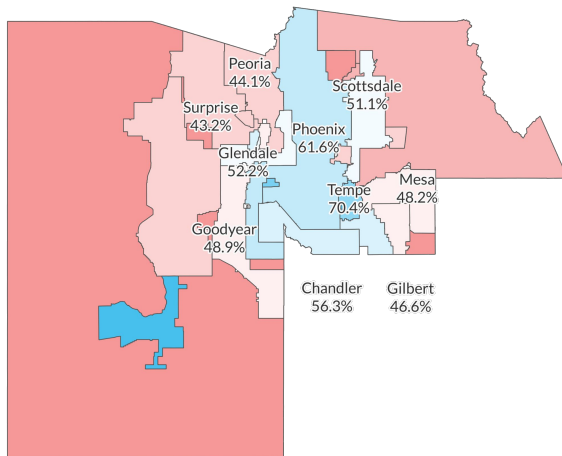
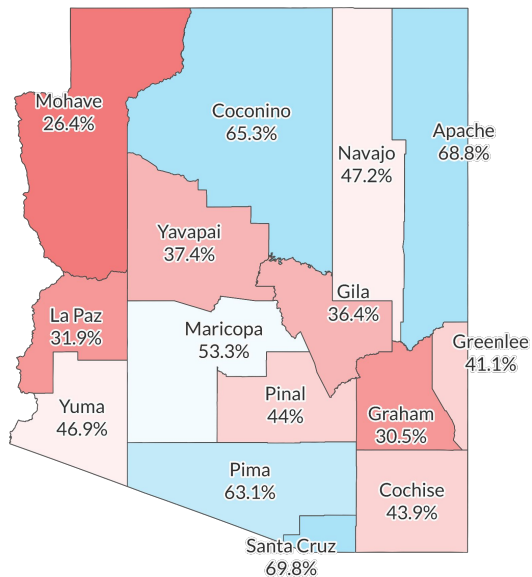
Majority-Latino Districts: Arizona

The below chart shows the proportion of precincts in Arizona that had either a substantial share or majority share of registered voters flagged as Hispanic or Latino on the voter file.



2022 Arizona Modeled Senate Results

Maricopa County



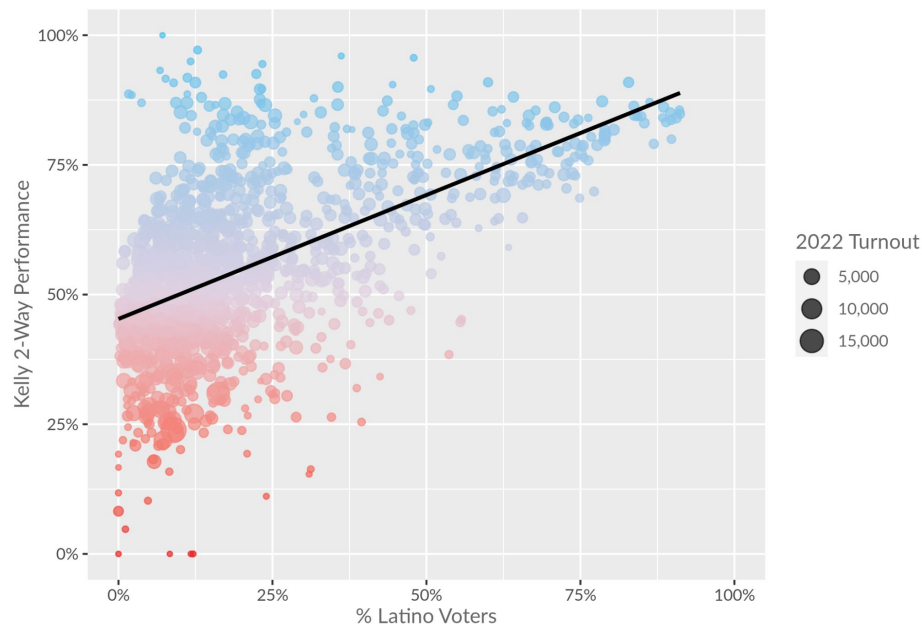
Modeled Two-Way Results:

Kelly (D) - 52.5%

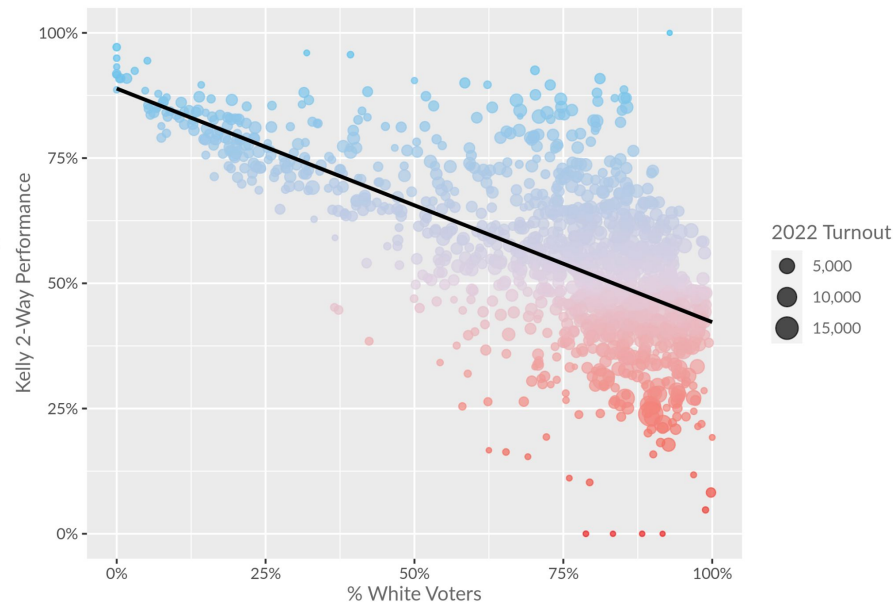
Masters (R) - 47.5%

2022 Modeled Dem 2-Way Performance by Precinct*

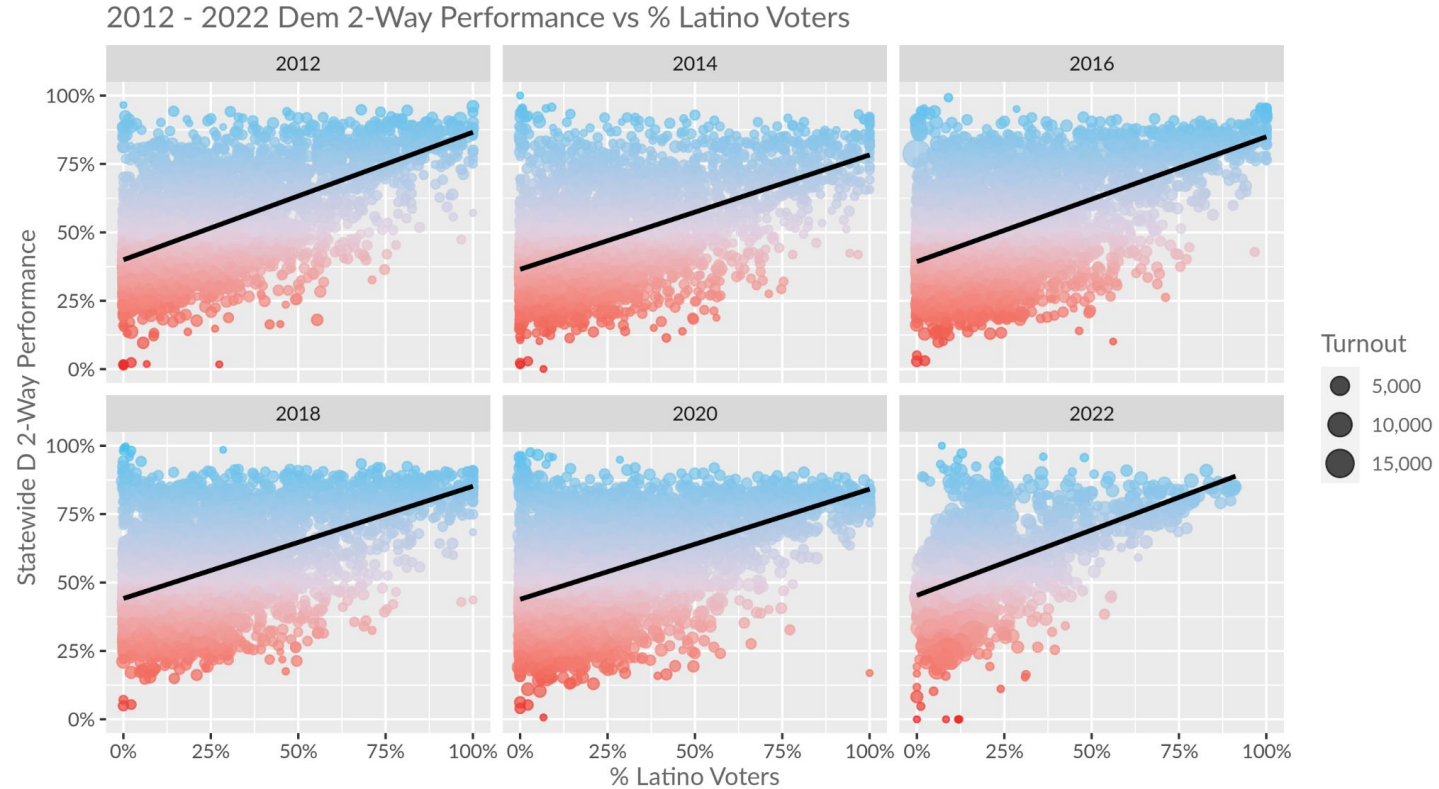
2022 Kelly 2-Way Performance vs % Latino Voters



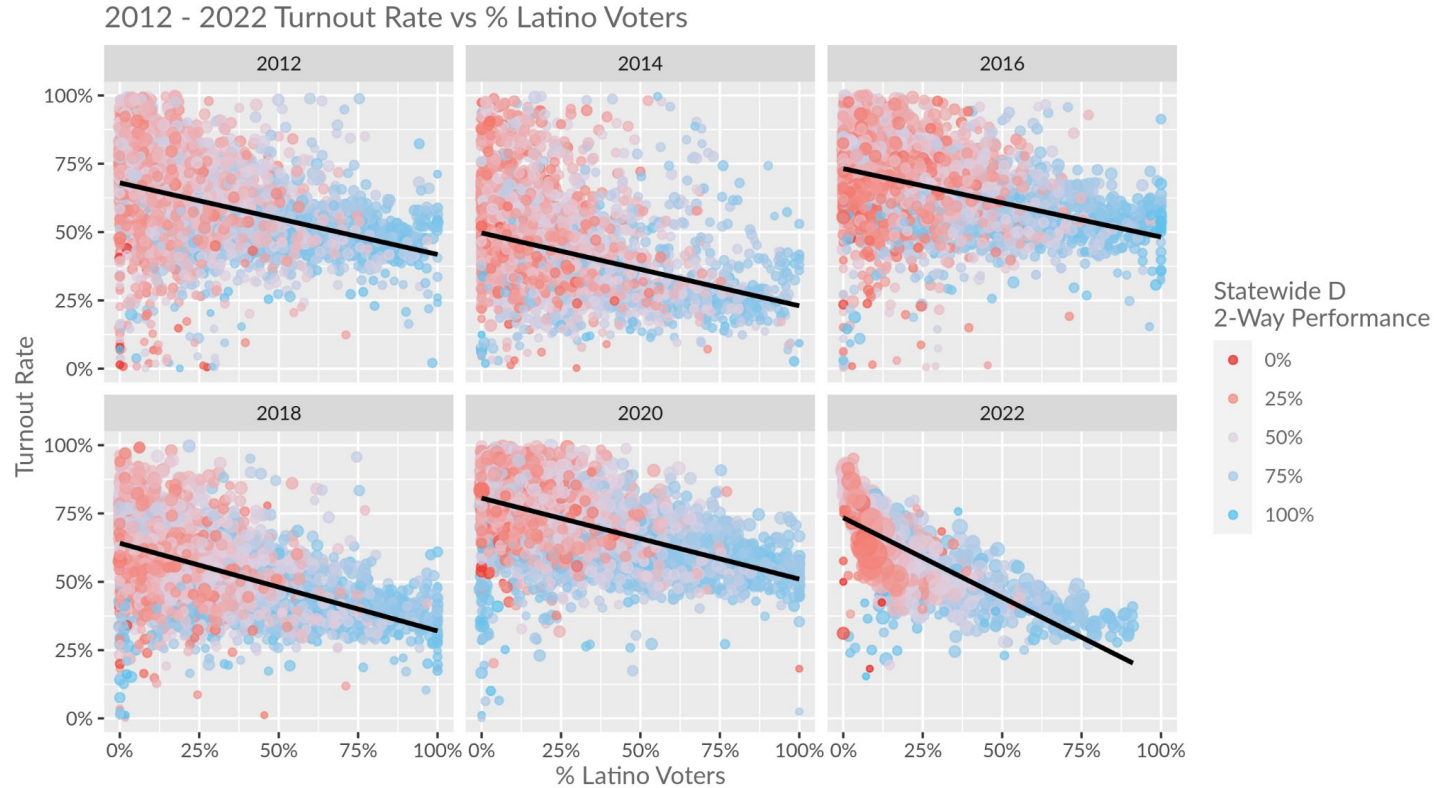
2022 Kelly 2-Way Performance vs % White Voters



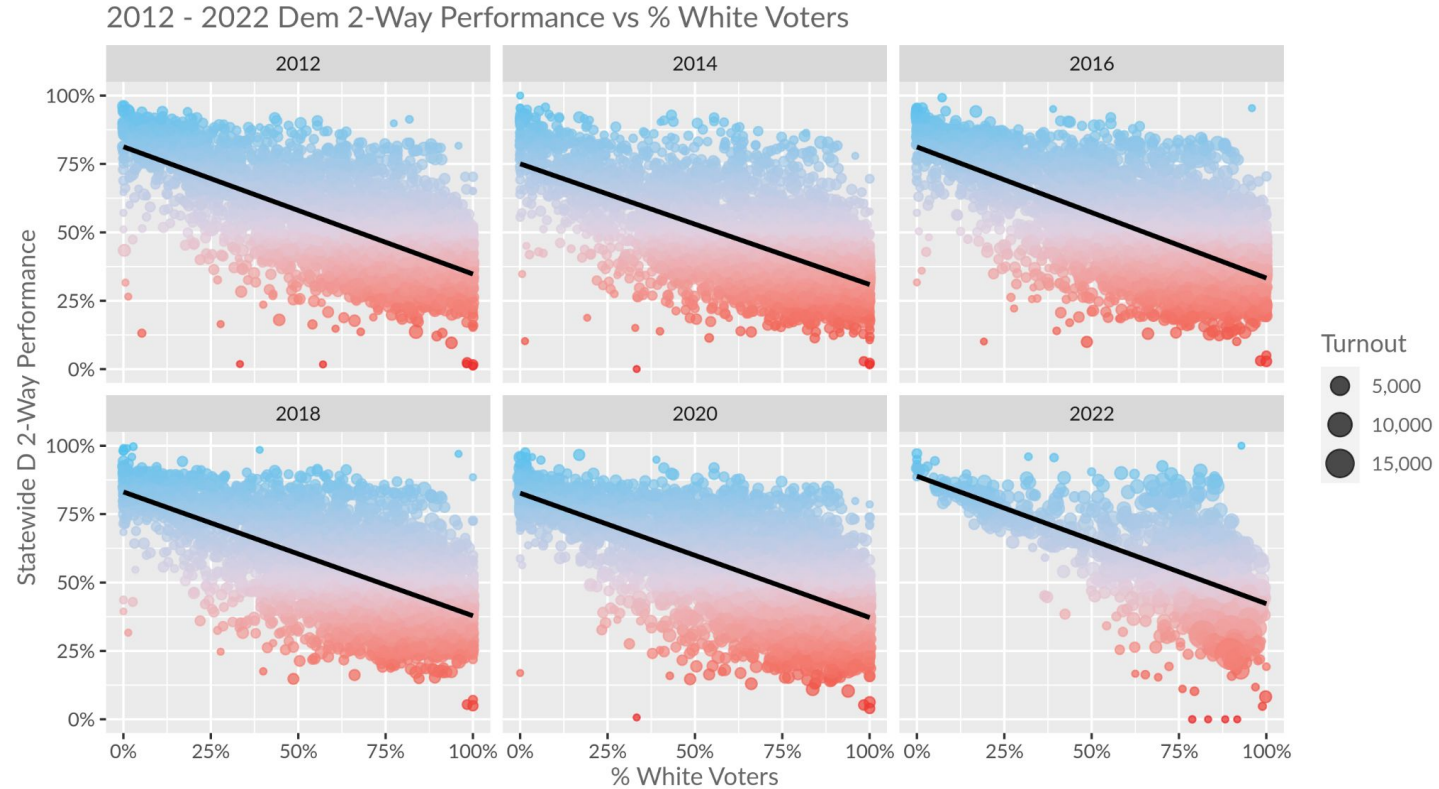
Historical Dem Support - Latinos (Arizona 2012-2022)



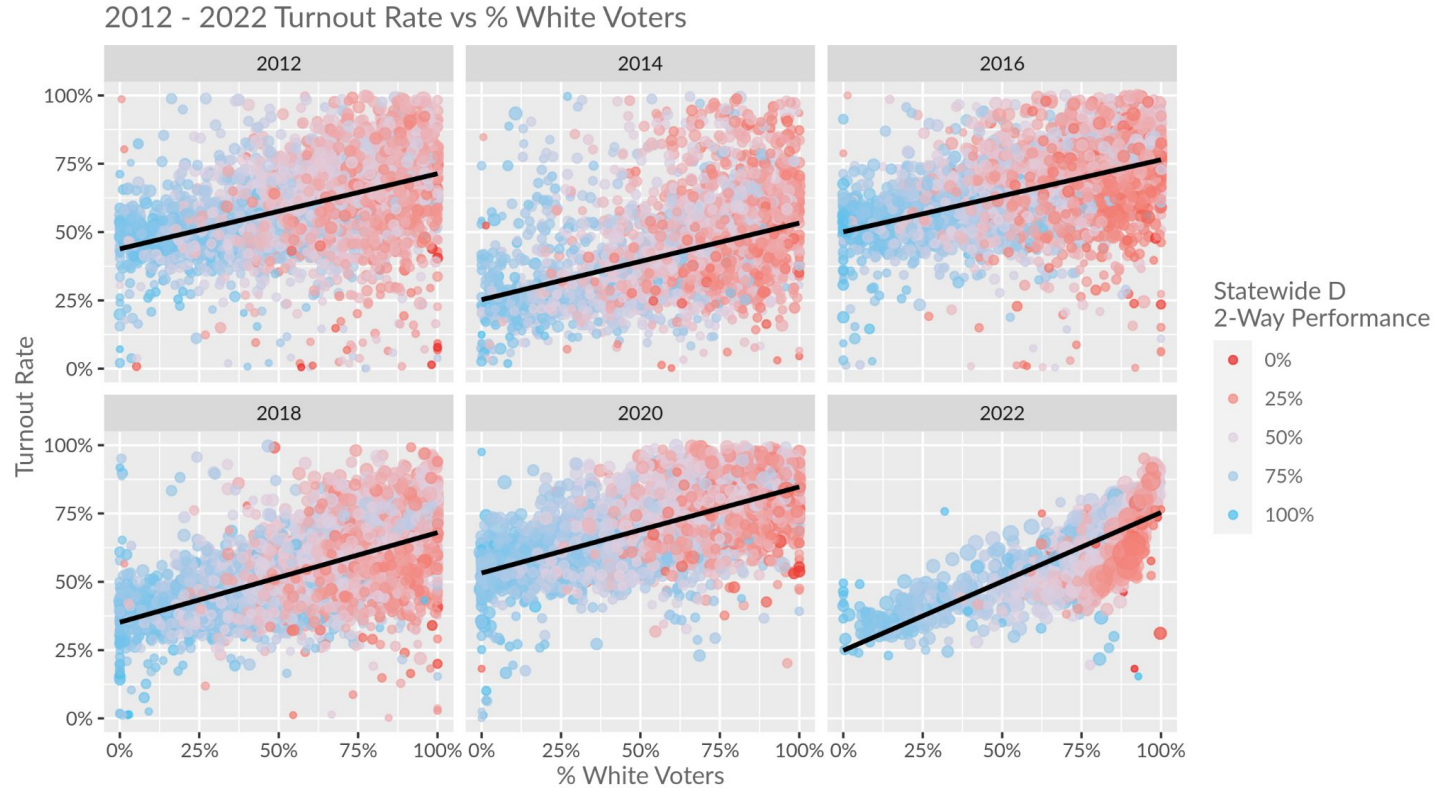
Historical Turnout - Latinos (Arizona 2012-2022)



Historical Dem Support - Whites (Arizona 2012-2022)

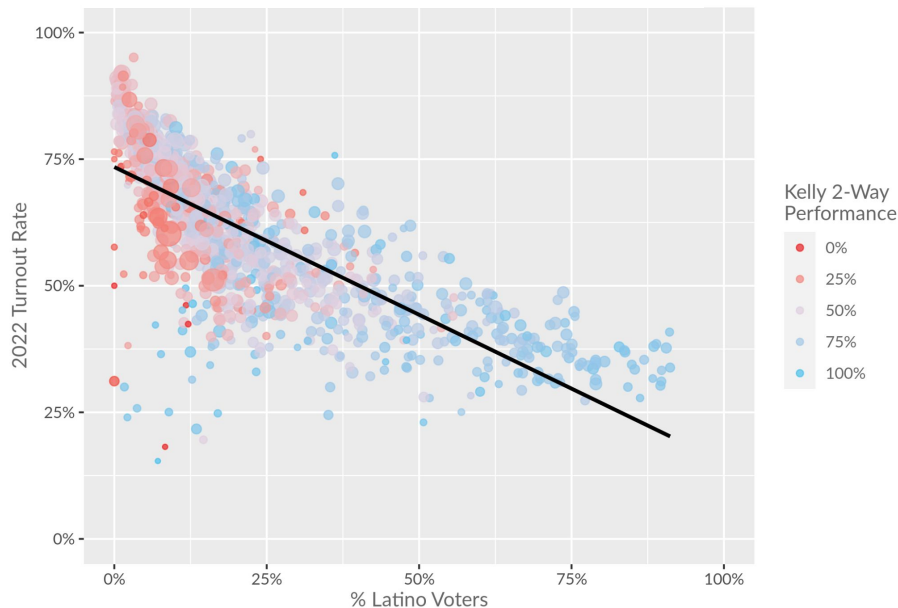


Historical Turnout - Whites (Arizona 2012-2022)

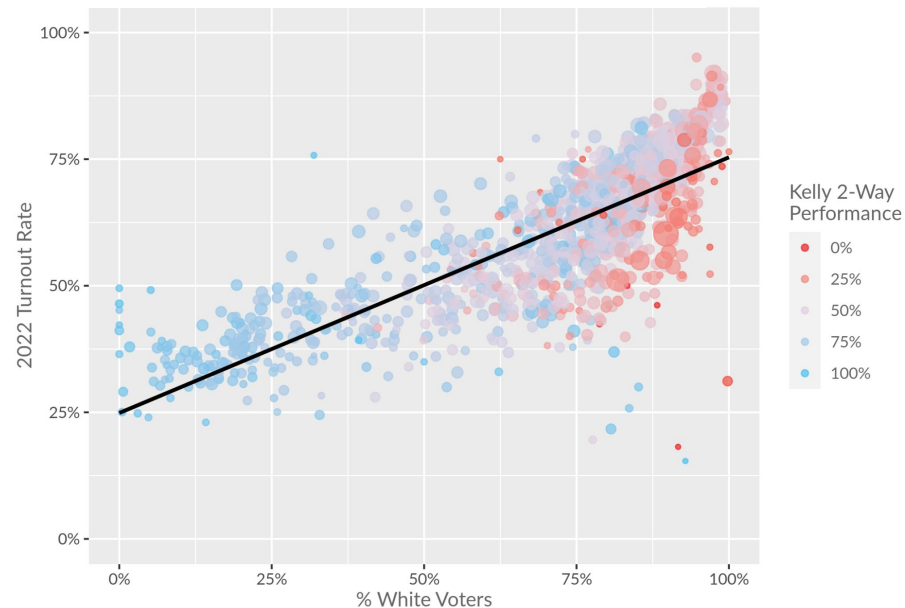


2022 AZ Turnout by % Hispanic/White by Precinct*

2022 Turnout Rate vs & Latino Voters



2022 Turnout Rate vs % White Voters



Model of Increased 2022 Latino Turnout - Arizona

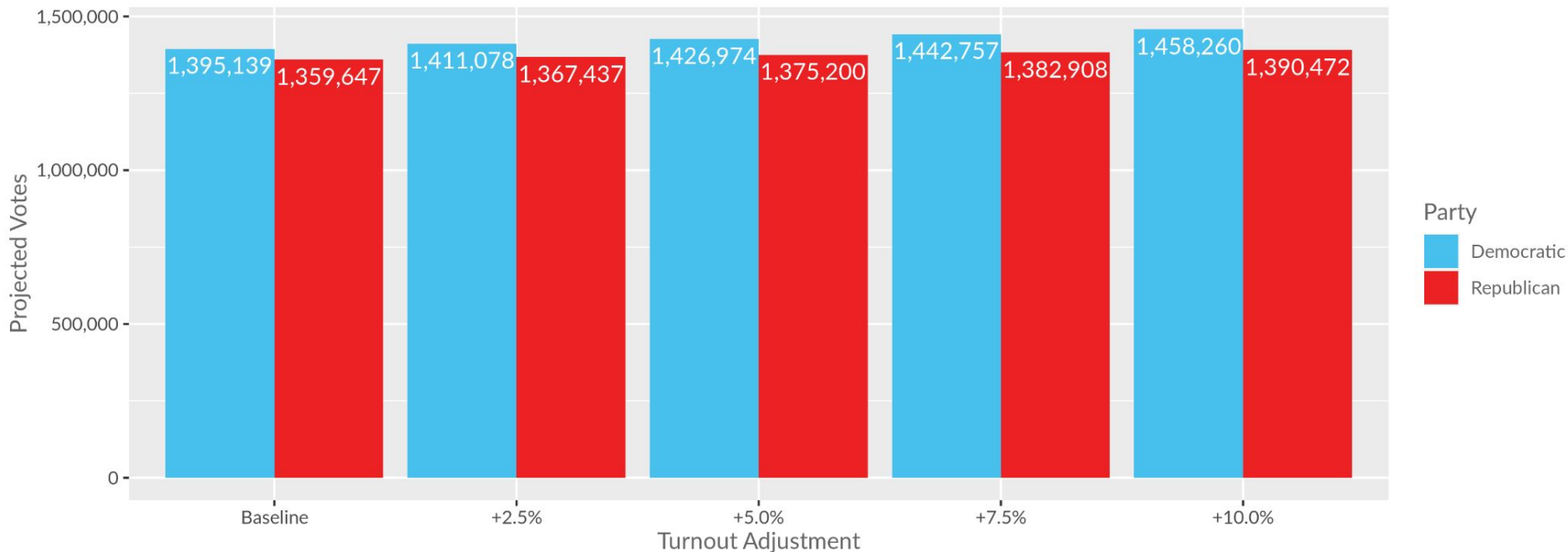
The below table shows the estimated turnout and generic Democrat 2-way support based on different Latino turnout levels in the 2022 election using a generic Democrat support model and the Clarity 2022 Turnout model.

Adjustment	Projected Turnout	Projected Democratic Votes	Projected Republican Votes	Projected Democratic 2-Way Performance	% Change in Democratic 2-Way Performance
Baseline (47.3% projected Latino turnout)	2,754,786	1,395,139	1,359,647	50.6%	
Latino Turnout +2.5%	2,778,515	1,411,078	1,367,437	50.8%	+0.2%
Latino Turnout +5%	2,802,174	1,426,974	1,375,200	50.9%	+0.3%
Latino Turnout +7.5%	2,825,665	1,442,757	1,382,908	51.1%	+0.5%
Latino Turnout +10%	2,848,732	1,458,260	1,390,472	51.2%	+0.6%

Model of Increased 2022 Latino Turnout - Arizona

The below table shows the estimated turnout and generic Democrat 2-way support based on different Latino turnout levels in the 2022 election using a generic Democrat support model and the Clarity 2022 Turnout model.

Modeled Latino Turnout Increases: Arizona

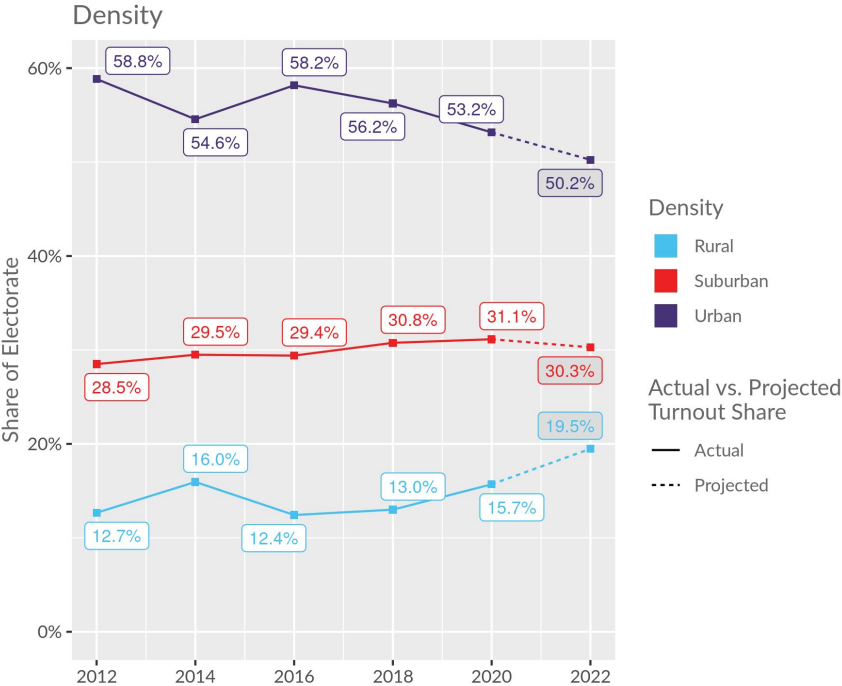
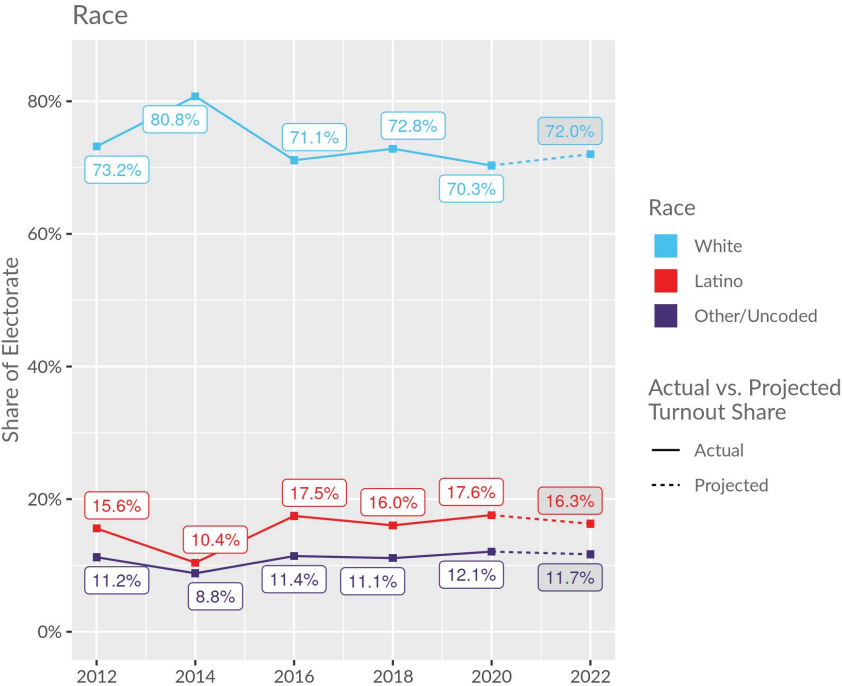


Key Findings: Nevada

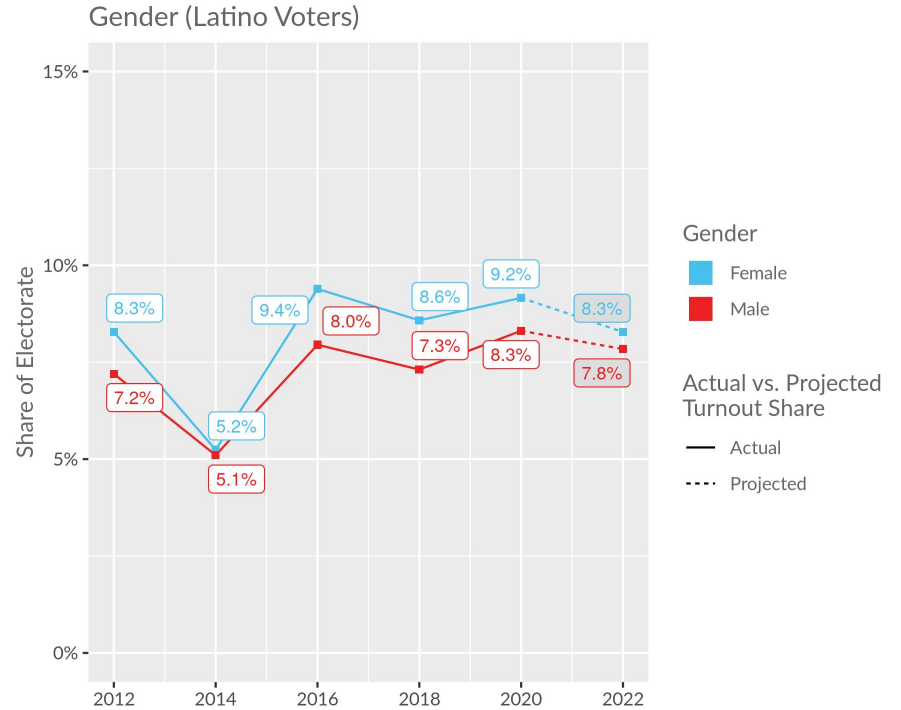
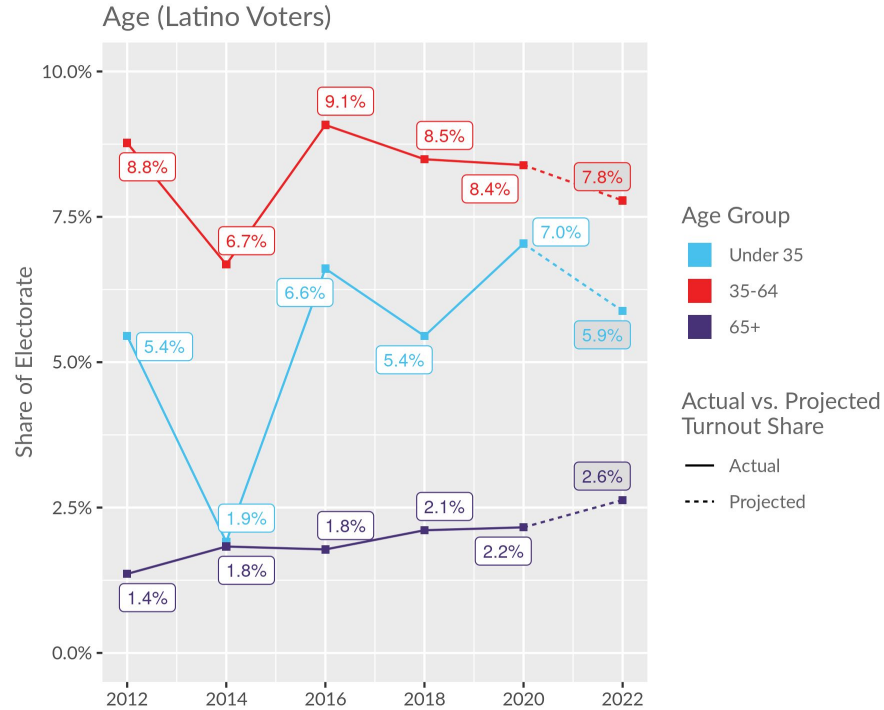
Nevada

- Latino voters have made up >15% of the electorate in every election in the last decade, except the 2014 midterms.
- As of 2023, nearly one-third of all precincts in NV have a substantial Latino population, and 5% of all precincts in NV are majority Latino.
- Areas with high proportions of Latino voters tend to be more supportive of Democratic candidates.
- Latinos and young voters are increasingly significant groups in NV's electorate. However, rural voters and voters unaffiliated with a political party have also increased their vote share in recent elections, largely leaving Democratic performance in the state at a standstill.

Demographic Trends: Nevada



Demographic Trends: Nevada



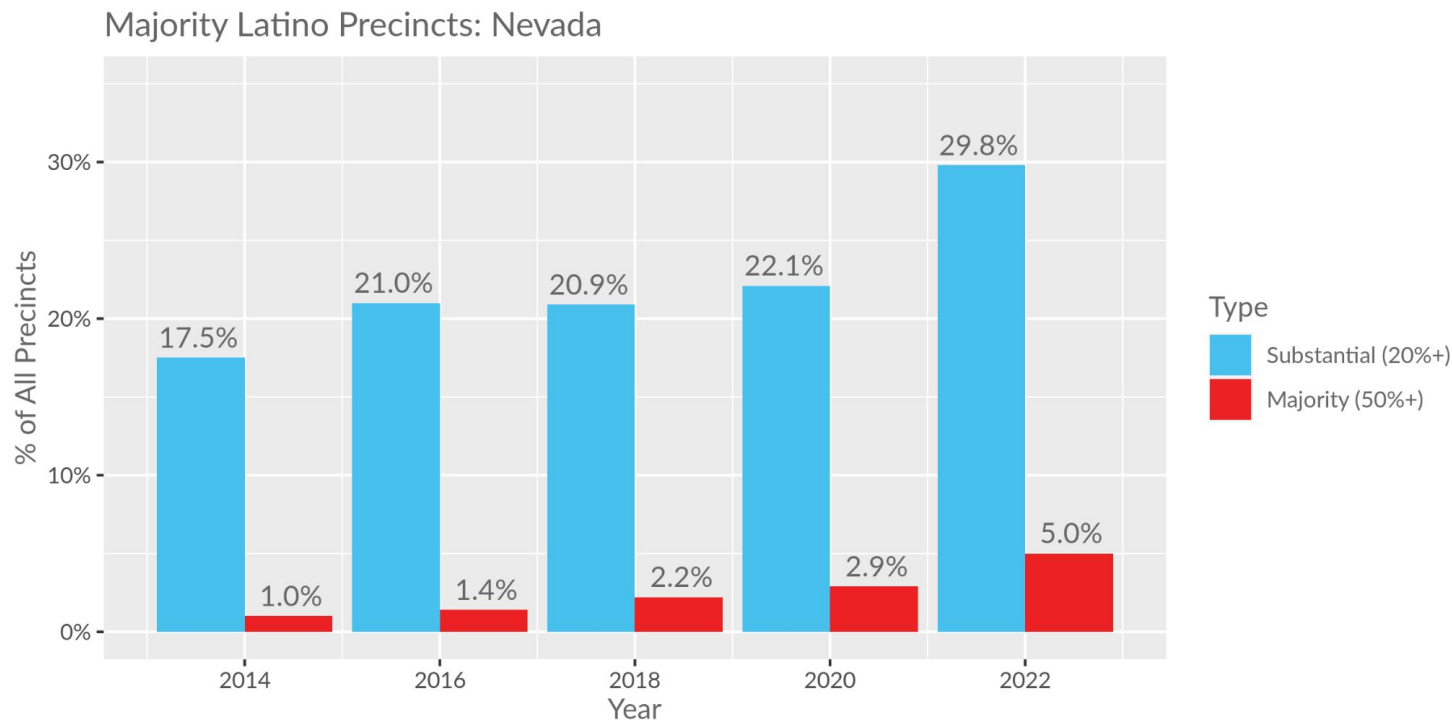
Majority-Latino Districts: Nevada

The below table shows the proportion of precincts in Nevada that had either a substantial share or majority share of registered voters flagged as Hispanic or Latino on the voter file.

Latino Precincts					
Election Year	Total Precincts	Substantially Latino Precincts (20%+)	% Precincts Substantially Latino	Majority Latino Precincts (50%+)	% Precincts Majority Latino
2022	1,563	465	29.8%	78	5.0%
2020	1,888	418	22.1%	54	2.9%
2018	1,821	380	20.9%	40	2.2%
2016	1,827	384	21.0%	26	1.4%
2014	1,770	310	17.5%	18	1.0%

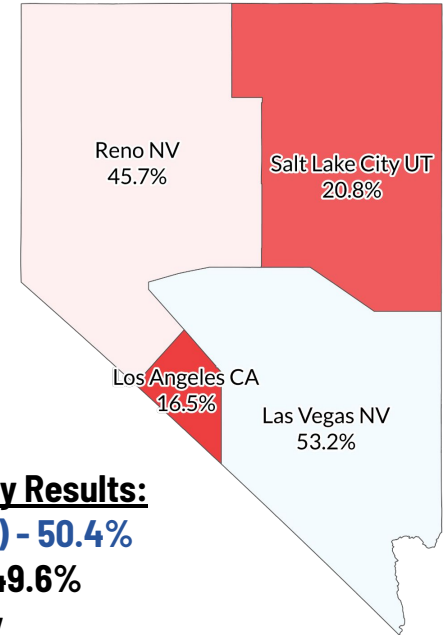
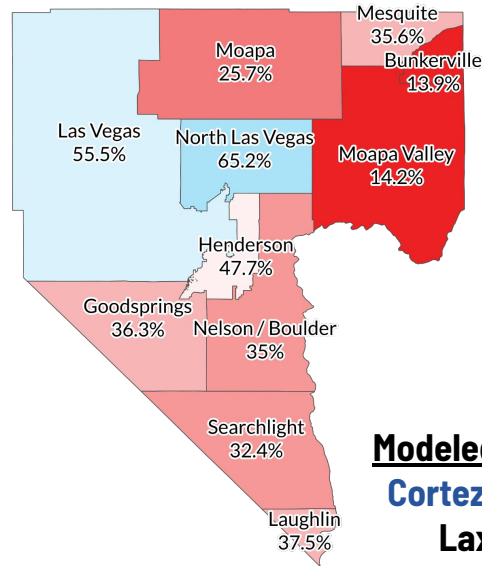
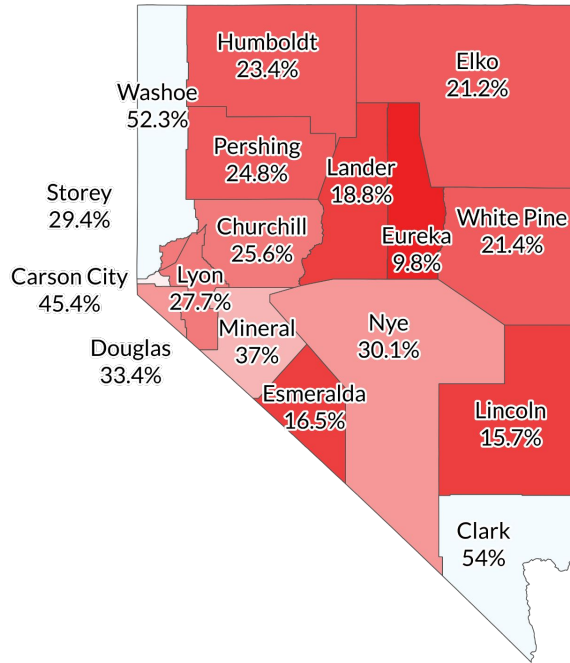
Majority-Latino Districts: Nevada

The below table shows the proportion of precincts in Nevada that had either a substantial share or majority share of registered voters flagged as Hispanic or Latino on the voter file.



2022 Modeled Nevada Senate Results

Clark County



Modeled Two-Way Results:

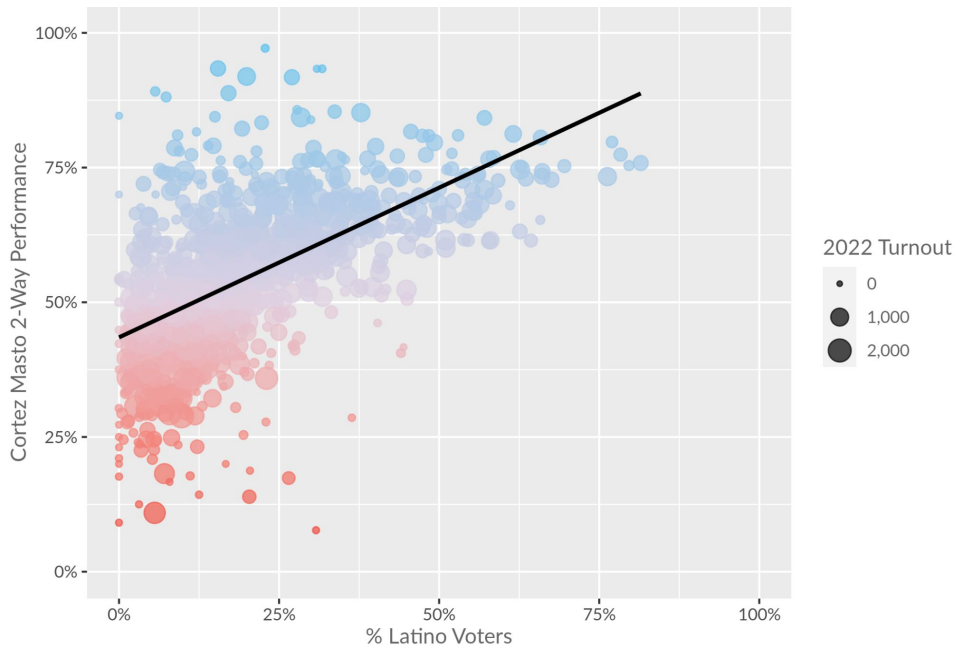
Cortez Masto (D) - 50.4%

Laxalt (R) - 49.6%

County

2022 Dem 2-Way Performance by Precinct*

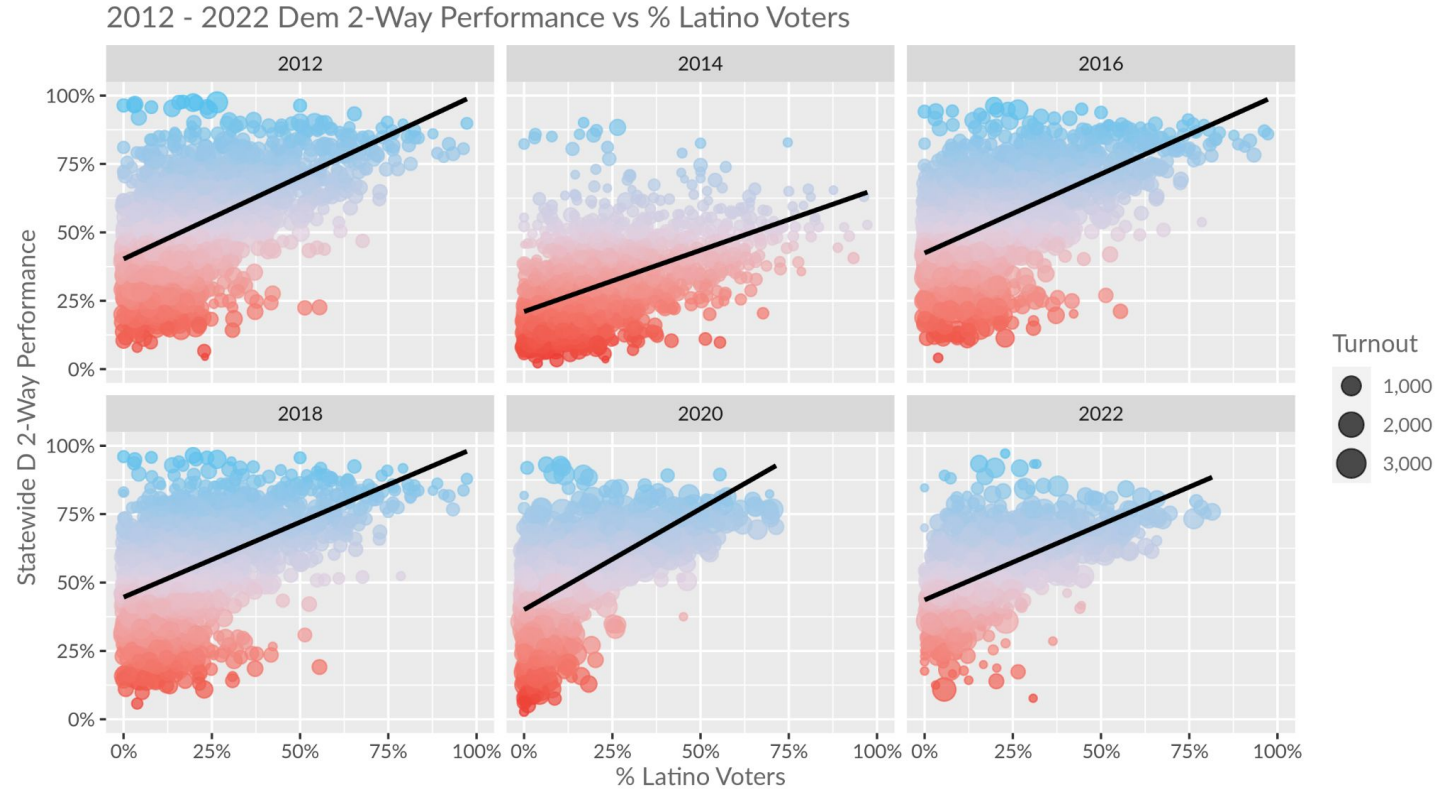
2022 Cortez Masto 2-Way Performance vs % Latino Voters



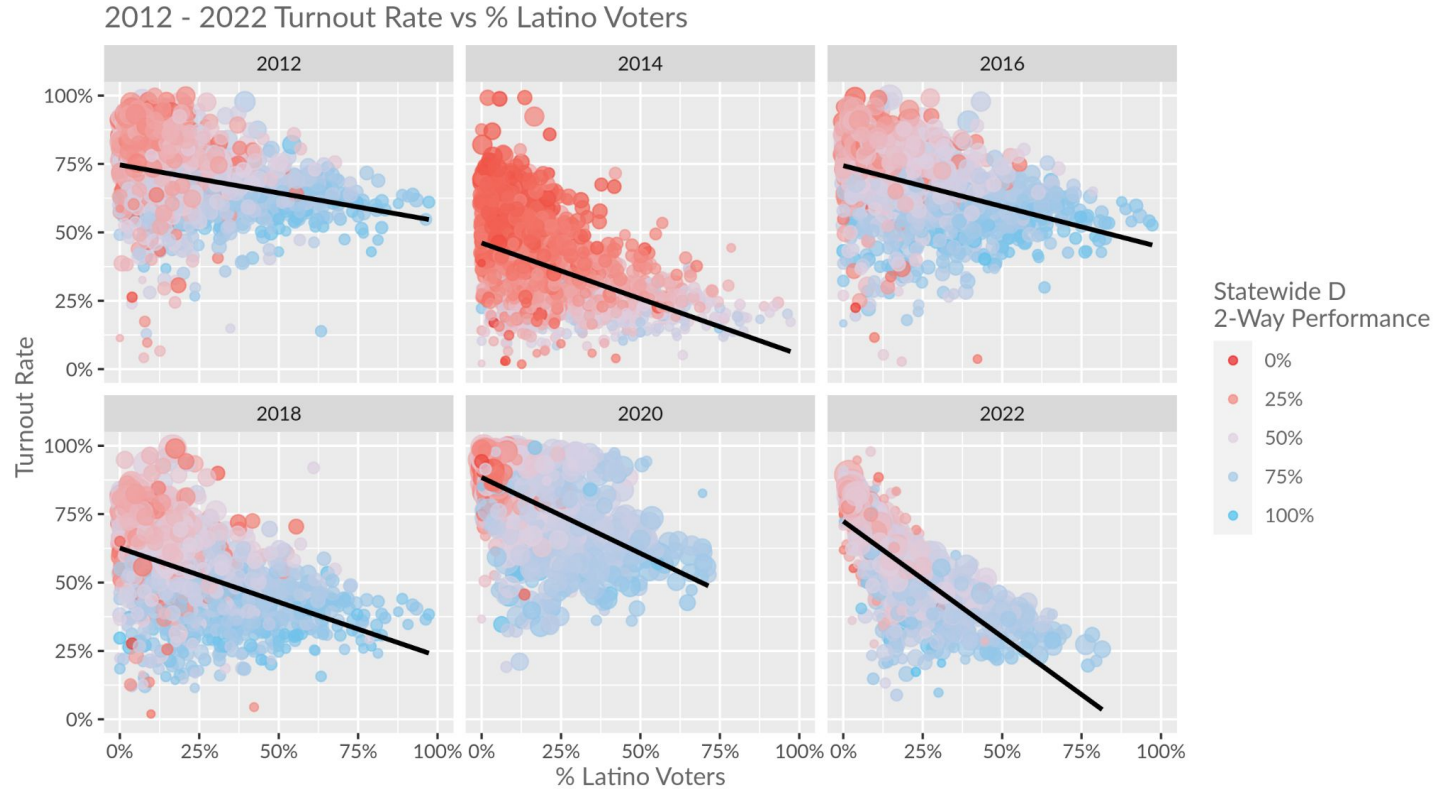
2022 Cortez Masto 2-Way Performance vs % White Voters



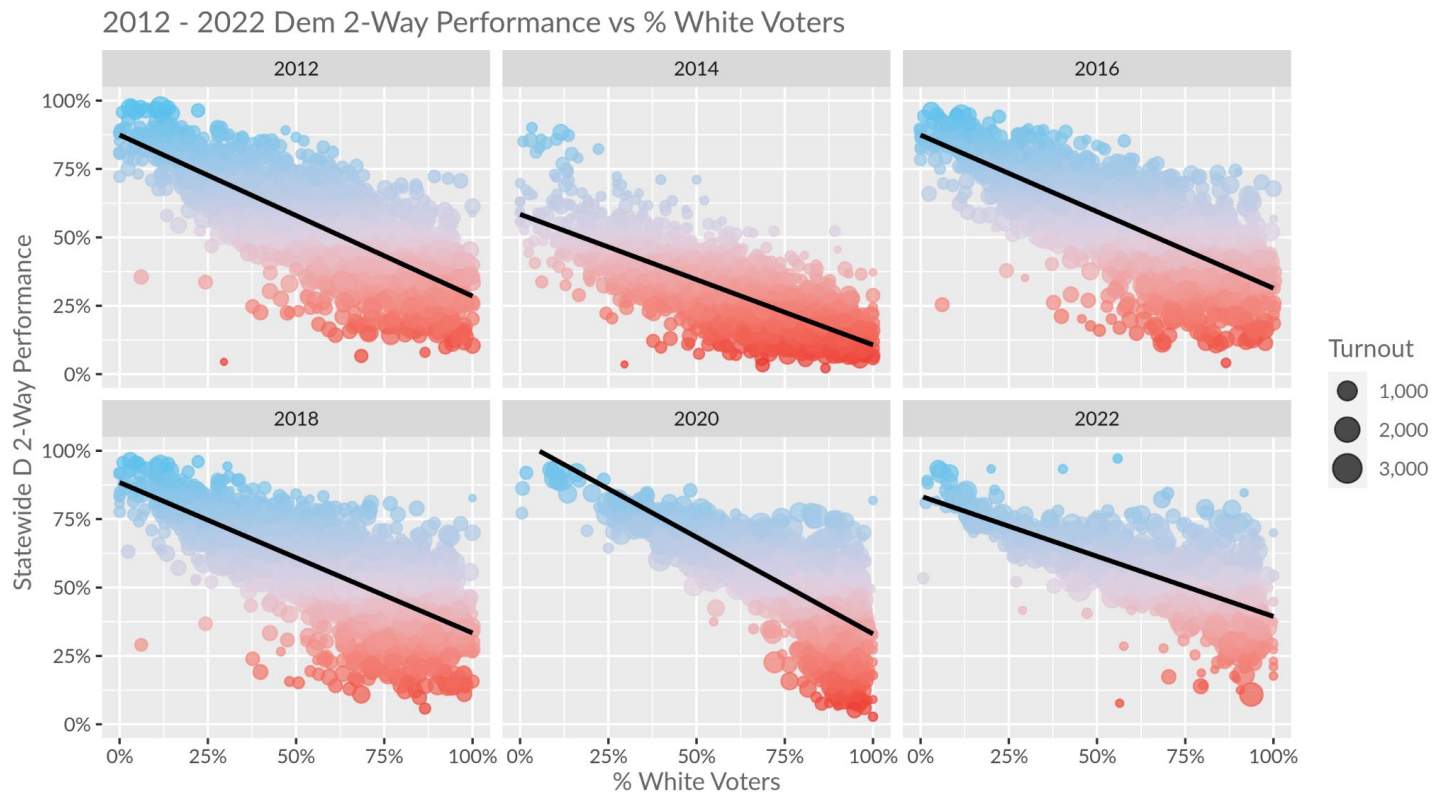
Historical Dem Support - Latinos (Nevada 2012-2022)



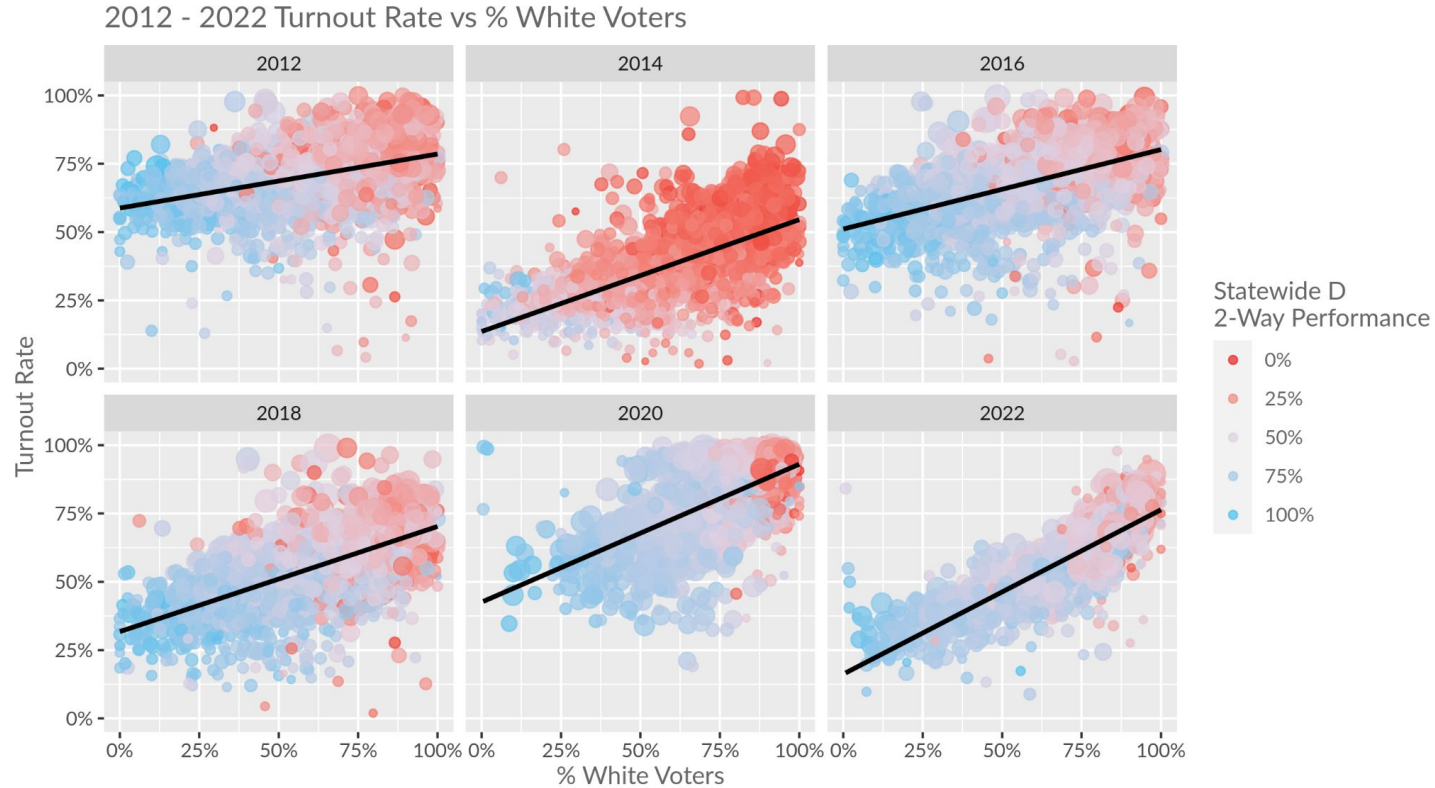
Historical Turnout - Latinos (Nevada 2012-2022)



Historical Dem Support - Whites (Nevada 2012-2022)

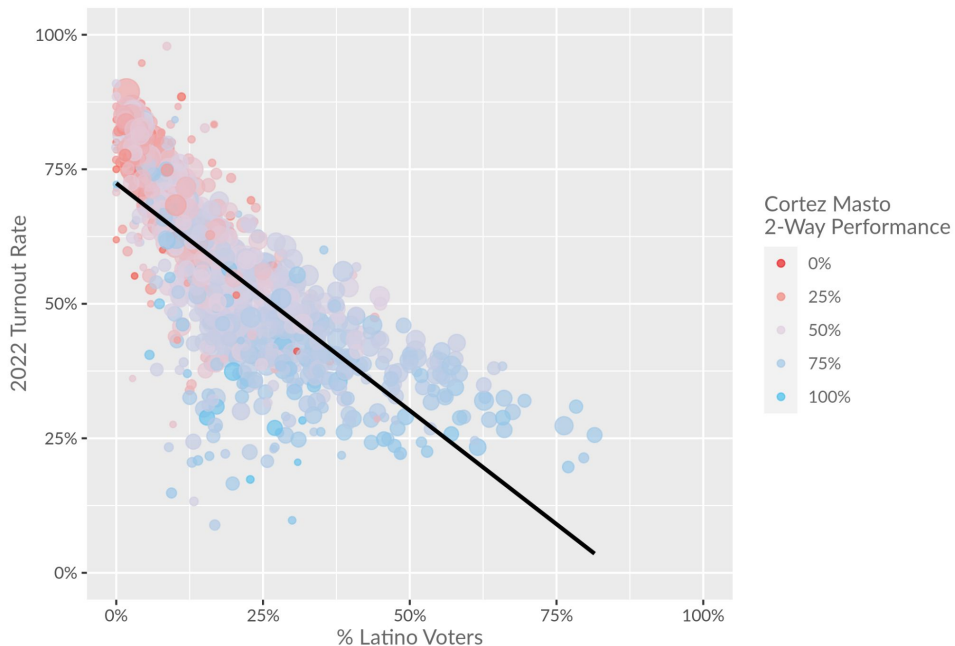


Historical Turnout - Whites (Nevada 2012-2022)

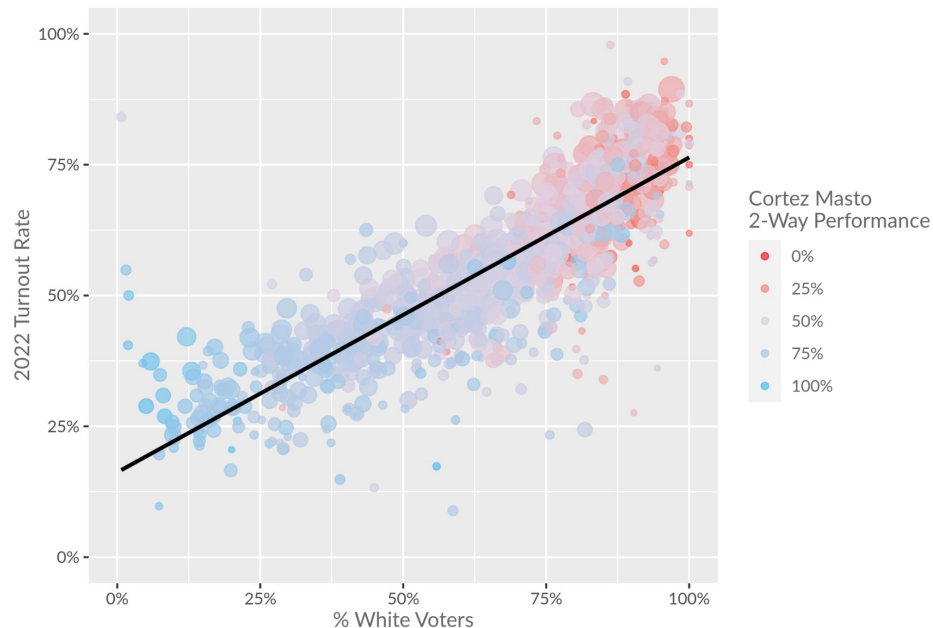


2022 NV Turnout by % Hispanic/White by Precinct*

2022 Turnout Rate vs % Latino Voters



2022 Turnout Rate vs % White Voters



Model of Increased 2022 Latino Turnout - Nevada

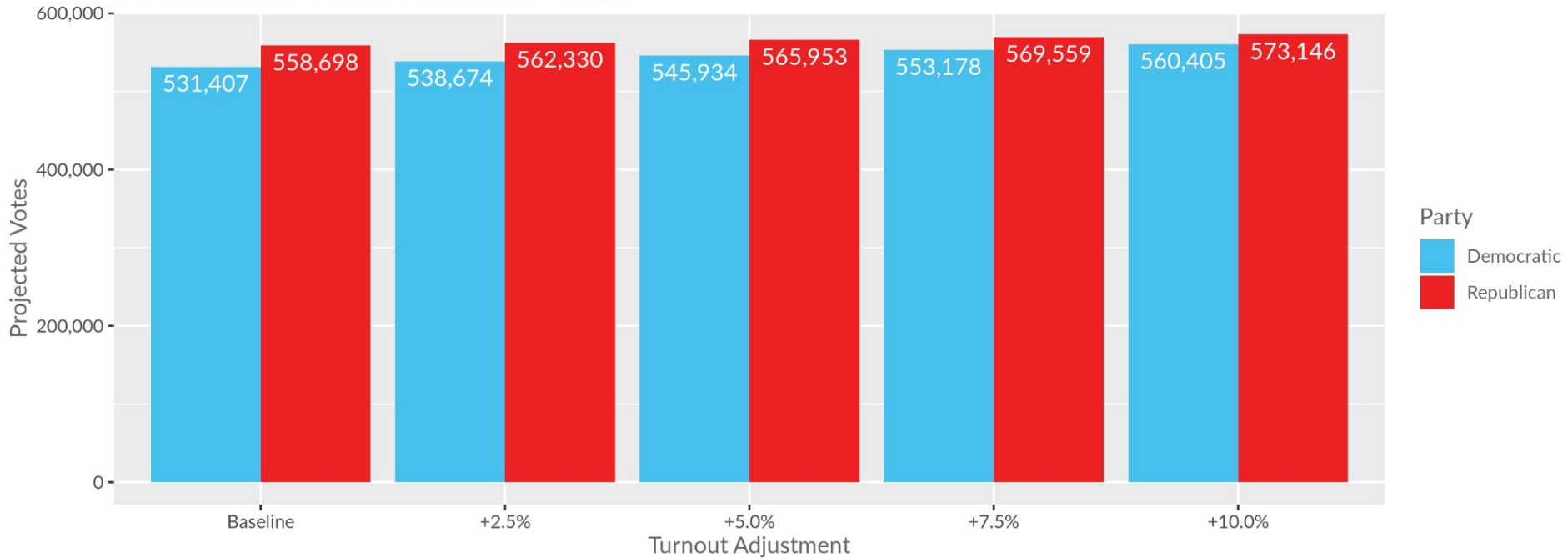
The below table shows the estimated turnout and generic Democrat 2-way support based on different Latino turnout levels in the 2022 election using a generic Democrat support model and the Clarity 2022 Turnout model.

Adjustment	Projected Turnout	Projected Democratic Votes	Projected Republican Votes	Projected Democratic 2-Way Performance	% Change in Democratic 2-Way Performance
Baseline (41.0% projected Latino turnout)	1,090,105	531,407	558,698	48.7%	
Latino Turnout +2.5%	1,101,004	538,674	562,330	48.9%	+0.2%
Latino Turnout +5%	1,111,887	545,934	565,953	49.1%	+0.4%
Latino Turnout +7.5%	1,122,736	553,178	569,559	49.3%	+0.6%
Latino Turnout +10%	1,133,551	560,405	573,146	49.4%	+0.7%

Model of Increased 2022 Latino Turnout - Nevada

The below table shows the estimated turnout and generic Democrat 2-way support based on different Latino turnout levels in the 2022 election using a generic Democrat support model and the Clarity 2022 Turnout model.

Modeled Latino Turnout Increases: Nevada



Thank You